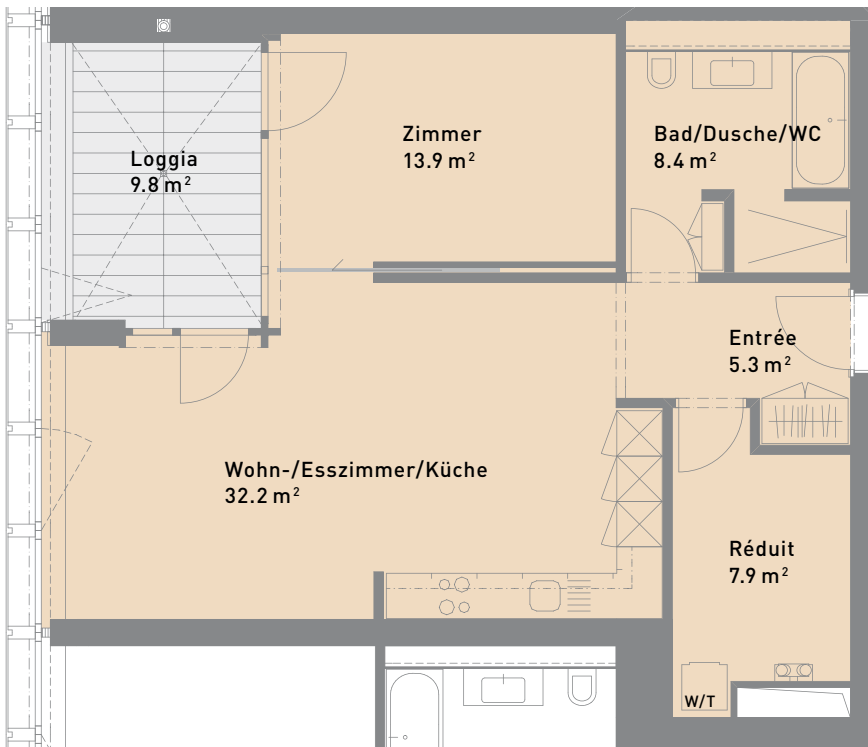
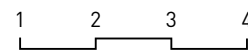


2.5-Zimmer-Wohnung, 71 m²

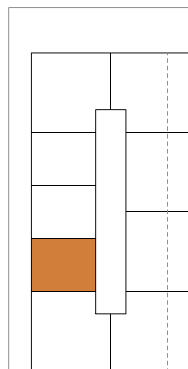
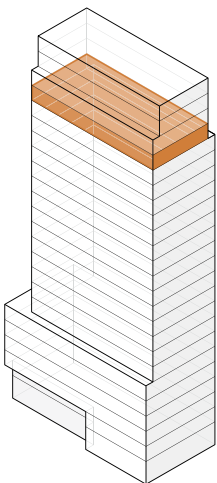
T.20.02



Grundriss M 1:100/Quadratmeterangaben im Grundriss: netto



Lage



Gebäude	Westlink Tower
Etage	20. Obergeschoss
Ausrichtung	West
Wohnungstyp	Extra
Mietfläche	71 m ²
Loggia	10 m ²