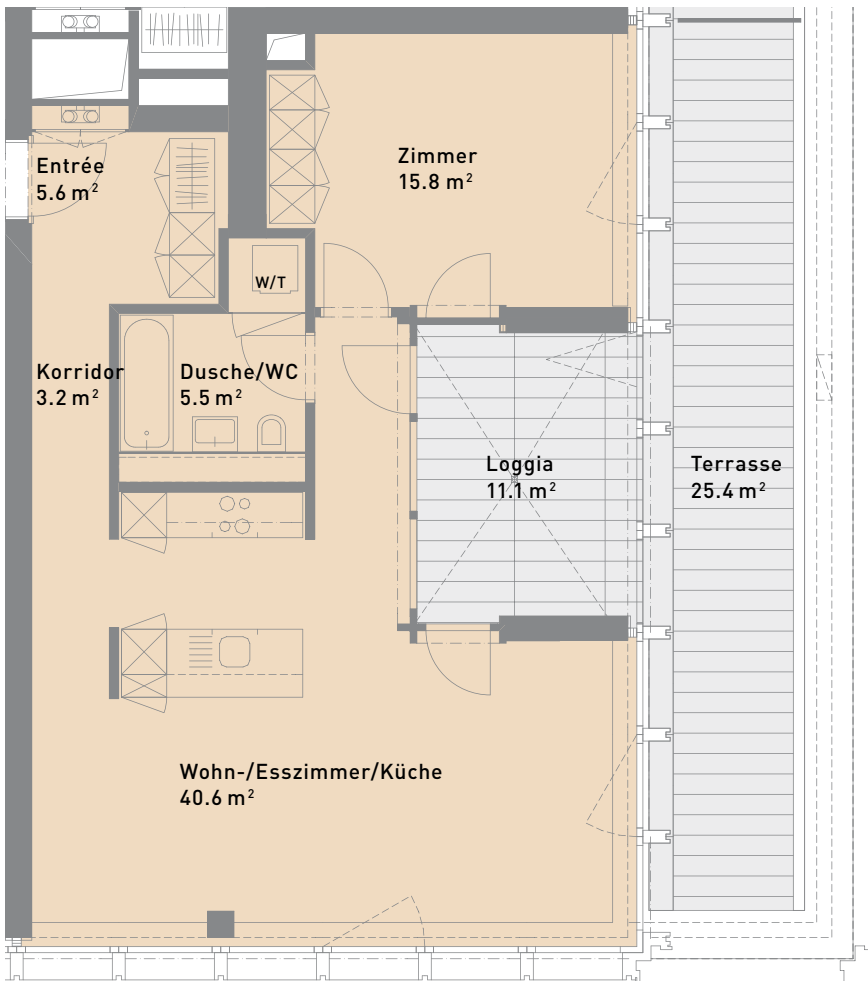
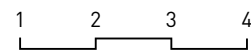


2.5-Zimmer-Wohnung, 72 m²

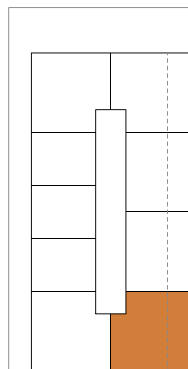
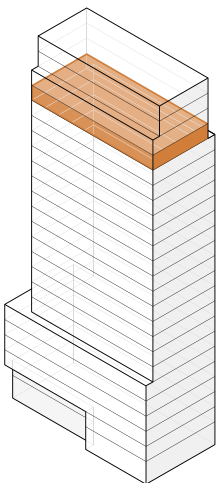
T.20.09



Grundriss M 1:100/Quadratmeterangaben im Grundriss: netto



Lage



Gebäude	Westlink Tower
Etage	20. Obergeschoss
Ausrichtung	Südost
Wohnungstyp	Extra
Mietfläche	72 m ²
Loggia	11 m ²
Terrasse	25 m ²