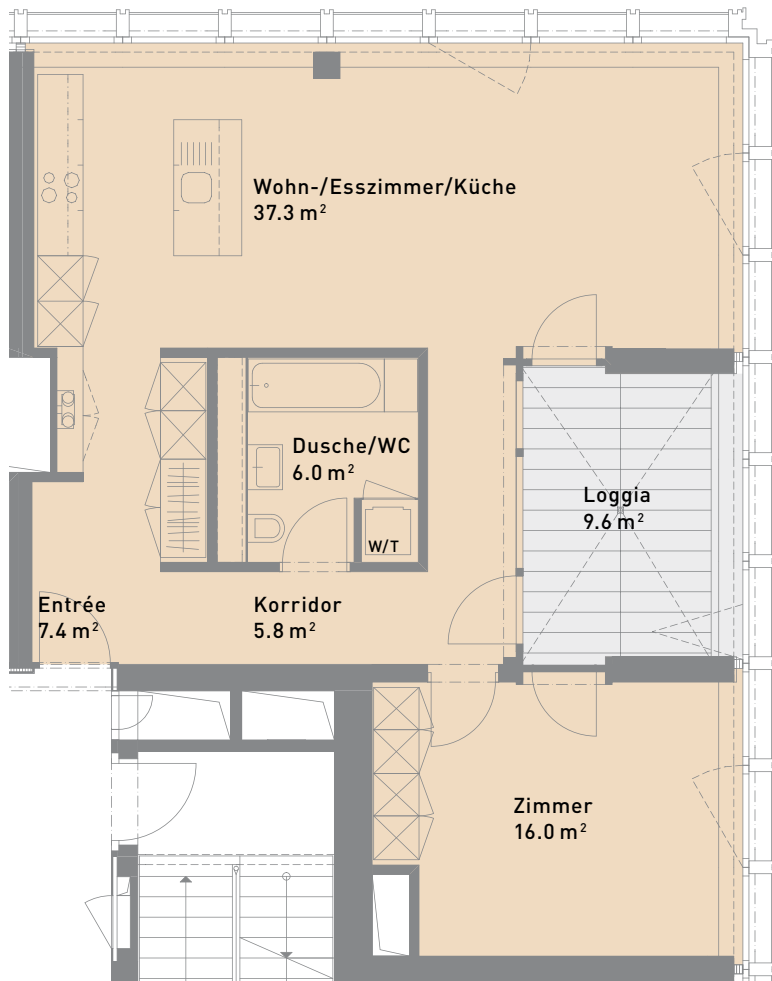
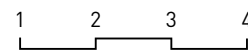


2.5-Zimmer-Wohnung, 74 m²

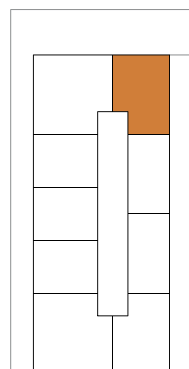
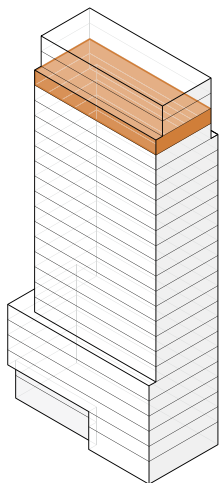
T.21.06



Grundriss M 1:100/Quadratmeterangaben im Grundriss: netto



Lage



Gebäude	Westlink Tower
Etage	21. Obergeschoss
Ausrichtung	Nordost
Wohnungstyp	Extra
Mietfläche	74 m ²
Loggia	10 m ²